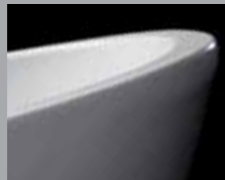


Royce Morgan  
BLACK

FREESTANDING LUXURY BATHING



*RM*



## Contents

- 5 Sapphire
- 7 Sapphire Black
- 9 Moonstone
- 11 Onyx
- 13 Pearl
- 15 Opal
- 17 Ebony
- 19 Ruby
- 21 Graphite
- 23 Topaz
- 25 Sunstone
- 27 Quartz
- 29 Amber



“...it is an obsession and an art.  
Details matter. Finish is everything”

*Nicholas Monture  
Ottawa, Canada*

"...it is truly a work of art,  
made by individuals,  
for individuals"

Pedro Duarte  
Loja, Spain

## Royce Morgan Black, distinctively white...

### **Welcome to a new chapter with Royce Morgan.**

Royce Morgan Black evolves from continuous pioneering techniques, boasting distinctive 'thin' edges, which create Black's desirable charm.

This range has raised the standard of bath manufacturing that will compliment any luxury bathroom. The styling and elegance is unmistakably Royce Morgan in its design and craftsmanship.

These minimalist gems effortlessly integrate a blend of straight lines and curves, which are unique and refreshing, bringing sophistication to any bathroom.

***Uncompromising style. Unparalleled craftsmanship.  
Unmistakably Royce Morgan Black.***

The logo features the brand name 'Royce Morgan' in a white, elegant, handwritten-style script.

Royce Morgan  
Since 2003

[www.roycemorgan.co.uk](http://www.roycemorgan.co.uk)



## Sapphire

In a world of refinement and simplicity lies this opulent and classic bath.

The 'Sapphire' embodies an uncluttered charm combining function, sophistication and unequalled beauty, adding finesse to any bathroom.

This bath combines unrivalled style with sublime comfort, never compromising either.

L1650 x W735 x H610 mm | 180 litres | 48kg





### Sapphire Black

Born of the same soul as the 'Sapphire' but with a different heart.

Its distinctive black exterior and striking white interior makes the 'Sapphire Black' an exquisite contrast from the 'Sapphire'.

'Sapphire Black' represents a perfect relationship between engineering and design with enhanced minimal elegance that descends gracefully to the floor.

L1650 x W735 x H610 mm | 180 litres | 48kg





## Moonstone

The soft contoured lines opens up a world of space and refinement with effortless grace making the pleasure of a long luxurious soak more desirable than ever.

The curvaceous, fluid 'Moonstone' bath makes an ideal architectural centrepiece for any bathroom.

L1760 x W780 x H740 mm | 170 litres | 50kg





## Onyx

Beautifully styled, the 'Onyx' never fails to stir the soul with its unique effusion of gracefulness with a profound sensation of warmth and tranquillity.

Influenced from the Royce Morgan Bolton bath, the design of the 'Onyx' is subtle, not attention seeking and has a profile that is lustrous and defined.

L1700 x W670 x H600 mm | 180 litres | 48kg





## Pearl

Grandeur and lavish was our focus on developing this individual perception that brings to you the more attractive and suave design expression.

For the experts that handcraft your bath, it is an obsession and an art. Details matter. Finish is everything. It all hints at the design and technology that are in reserve at all times.

L1580 x W750 x H580 mm | 262 litres | 37kg







## Opal

Royce Morgan imbues the 'Opal' bath with understated elegance and graceful styling with its clean, simple superior lines. The effortless design is flawless and modest.

Poise and comfort is an intoxicating mix; one which the 'Opal' has naturally perfected.

L1790 x W820 x H630 mm | 200 litres | 50kg



## Ebony

'Ebony' is about luxury, indulgence and enjoyment; it is a feast for the senses as it reclines at the perfect angle with full head support offering maximum comfort and tranquillity.

Every curve is perfectly conceived with a seductive flow that incorporates a delicate allure and a sculptured distinction.

L1710 x W735 x H730 mm | 175 litres | 52kg





## Ruby

This thin edged conception creates a more refined approach influenced by the Royce Morgan Woburn bath. Delicately balancing a combination of serenity and panache.

Question the ordinary in search of a surprising, long-lasting bathing experience, which exudes emotion. It is truly a work of art, made by individuals, for individuals.

L1580 x W740 x H550 mm | 228 litres | 34kg



### Graphite

A synthesis of traditional craftsmanship, 'Graphite' is a sumptuous and spacious bath, luxury in the finest tradition.

With a combination of innovative design and exceptional hand-build expertise makes the 'Graphite' a luxury bath without equal, integrating a tap platform that's striking and individual.

L1715 x W830 x H640 mm | 180 litres | 48kg



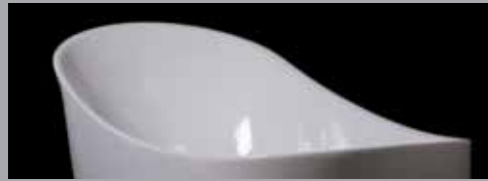


## Topaz

Distinction at its best, every inch a classic. A curious design that transforms individuality into a supreme but elite bathing ambience.

'Topaz', with its sharp but acute proportional features, which compliment its statuesque and seductive impression.

L1700 x W750 x H570 mm | 230 litres | 41kg



### Sunstone

Enchantment and desire to reach new limits, this refreshing and original style combines technological excellence with an enticing appeal.

Delivering an intoxicating blend of imperious aesthetics and sensory indulgence, every soak is an experience to savour.

L1590 x W700 x H780 mm | 216 litres | 34kg







## Quartz

One of the most precious stones, this bath constitutes charisma with soft symmetrical contoured lines.

This simply stunning bath blends timeless traditions with contemporary design and the latest technology. The perfect fusion of handcrafted luxury ensures the remarkable 'Quartz' bath creates an intrinsic revolution.

L1760 x W680 x H670 mm | 170 litres | 52kg





## Amber

Understated beauty, harmonising extravagance with a refreshing contentment.

The inherent quality and smooth contoured lines integrate seamlessly giving a minimum of distraction with its demure and inspiring design.



L1780 x W800 x H540 mm | 265 litres | 44kg



“...delivering an intoxicating  
blend of imperious aesthetics  
and sensory indulgence”

*Aldo De Vittoris*  
*Lazio, Italy*



### Your Royce Morgan Bath

- Royce Morgan baths are made using two pieces of 5mm sanitary grade acrylic sheets.
- Both the inner and outer acrylic skins are then reinforced using resin bonded glass fibre strands.
- When the resin is cured it sets solid to give both acrylic skins an improved strength and rigidity.
- They are both then coated with thermal sheets so that the water in the bath has a longer heat retention.
- The inner and outer skins are then bonded together using a polyester based cast giving it a solid base.

“...understated beauty,  
harmonising extravagance  
with a refreshing contentment”

*Oskar Elisabet  
Ekerö, Sweden*



## How to care for your bath

- It is recommended each time you use your bath, to cover the base of the bath with cold water before turning on the hot tap.
- For everyday cleaning we recommend using a soft damp cloth or just warm soapy water.
- You should never use abrasive cleaners on your bath, they will scratch the surface of the acrylic, which will affect the appearance of the glossy look.
- If you do scratch your bath, we recommend using an enamel cleaning agent or car polish (T-Cut), this will help to restore your bath back to a lustre finish.
- Replace worn washers on dripping taps to prevent surface marking.
- Warning – Solvents such as paint stripper or nail varnish remover will damage the bath.

*All Royce Morgan baths are covered  
by a Lifetime Guarantee.*

*For technical details please visit  
[www.roycemorgan.co.uk](http://www.roycemorgan.co.uk)*

*Royce Morgan*  
BLACK

Uncompromising style. Unparalleled craftsmanship. Unmistakably Royce Morgan Black.



Royce Morgan Ltd  
Hamilton House  
Duncombe Road  
Bradford  
West Yorkshire  
BD8 9TB

Tel. 08451 16 16 16  
Fax. 08451 16 16 17

[sales@roycemorgan.co.uk](mailto:sales@roycemorgan.co.uk)  
[www.roycemorgan.co.uk](http://www.roycemorgan.co.uk)

*Royce Morgan Black is a trademark of Royce Morgan Limited.  
All products are covered by our Lifetime Guarantee. Terms and conditions apply.*

*For technical specifications please see [www.roycemorgan.co.uk](http://www.roycemorgan.co.uk)  
All products are subject to availability and we reserve the right to change specifications and prices without prior notice.*